

# 17系列无菌级双管板管壳式换热器

17 Series Sanitary Double Tubesheet Heat Exchanger



## 性能及结构

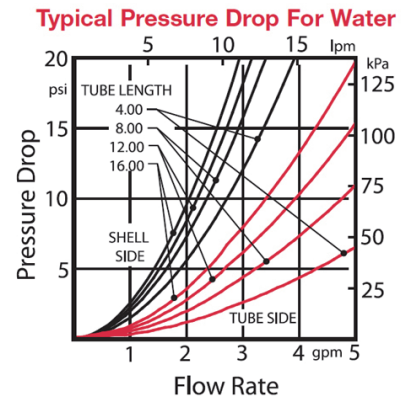
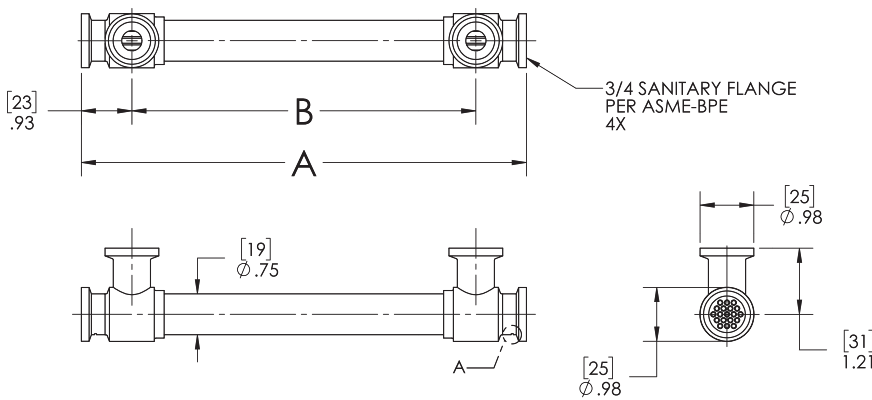
Performance & structure

<b>【最大工作压力】</b> Max. working pressure	管程 Tube side: <b>103bar</b> 壳程 Shell side: <b>69bar</b>
<b>【最大蒸汽压力】</b> Max. steam pressure	<b>8.6bar</b>
<b>【最大工作温度】</b> Max. working temperature	<b>425°C</b>
<b>【产品材质】</b> Product material	<b>316L 不锈钢, 哈氏合金或镍铬合金等</b> 316L SS, Hastelloy, Inconel and other alloy
<b>【连接方式】</b> Fitting type	<b>卫生级卡盘</b> Sanitary Flange

- Ra ≤ 0.4μm  
Ra ≤ 0.4μm
- CIP 在线清洗  
Clean-in-place
- 符合 cGMP / FDA 要求  
cGMP / FDA compliant



**EXERGY**  
HEAT TRANSFER SOLUTIONS



管束数目 Tube Count	管束长度 Tube Length in (mm)	型号 Model	电抛光 Electropolished	A in (mm)	B in (mm)	重量 Weight (Kg)	传热面积 Transfer Area (cm <sup>2</sup> )
19	4.14 (105)	03719-01 03719-05	•	4.14 (105)	2.29 (58)	0.2	114
	8.14 (207)	03719-02 03719-06	•	8.14 (207)	6.29 (160)	0.3	259
	12.14 (308)	03719-03 03719-07	•	12.14 (308)	10.29 (261)	0.4	404
	16.14 (410)	03719-04 03719-08	•	16.14 (410)	14.29 (363)	0.5	548
	20.14 (512)	03719-09 03719-12	•	20.14 (512)	18.29 (465)	0.6	694
	25.14 (639)	03719-10 03719-13	•	25.14 (639)	23.29 (592)	0.7	874
	30.14 (766)	03719-11 03719-14	•	30.14 (766)	28.29(719)	0.7	1055